

CARESSA

CA-004, Navy

TECHNICAL INFORMATION

CATEGORY: Upholstery
CONTENT: 80% Vinyl - Phthalate Free face, 20% Polyester backing
BACKING: 100% Polyester
FINISH: Soil & Stain Resistant Top Coat with Ink Resistant Technology
WIDTH: 54"
WEIGHT: 29 oz./ln yd
VISUAL REPEAT: None
SHOWN RAILROADED: No
DIRECTIONAL: No
APPROX. ROLL SIZE: 30 yards
APPLICATION: Indoor / Atrium

PERFORMANCE

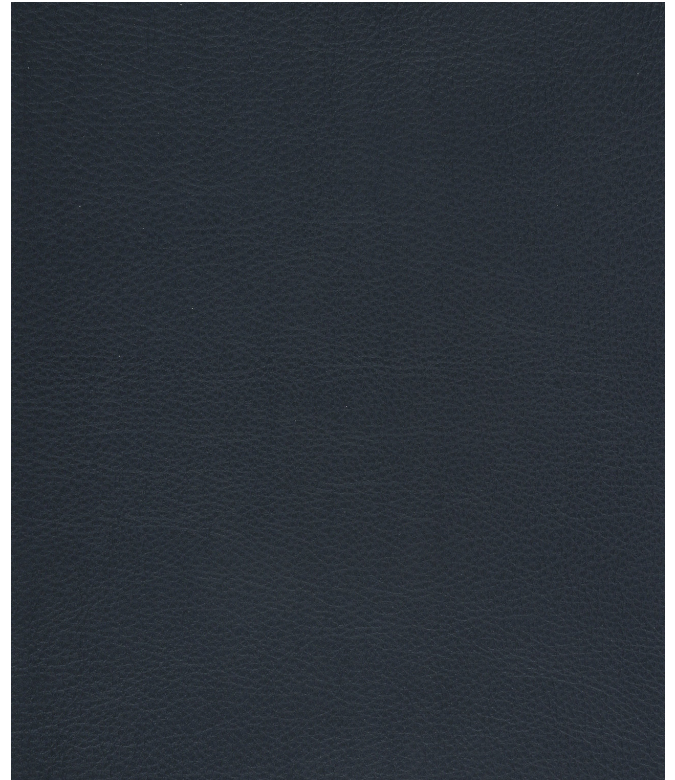


ABRASION RESISTANCE: Passes 650,000 Double Rubs* (Wyzenbeek/Cotton Duck)
BREAKING STRENGTH: Warp 115.0 / Fill 102.0
COLORFASTNESS TO CROCKING: Dry: Class 4 min/Wet: Class 4 min
COLORFASTNESS TO LIGHT: 1000 hours
PILLING RESISTANCE: Class N/A
SEAM STRENGTH: Warp 53.0 / Fill 50.0
COLD CRACK: -20 °F
INK RESISTANT
LIQUID BARRIER
DENIM DYE RESISTANT
MILDEW RESISTANT

* Multiple factors affect fabric durability and appearance retention, including end-user application and proper maintenance. Wyzenbeek results above 100,000 double rubs have not been shown to be an indicator of increased lifespan.

FLAMMABILITY

PASSES CAL TB 117-2013
NFPA 260/UFAC CLASS 1
AB 2998 COMPLIANT
FMVSS 302



REDUCED ENVIRONMENTAL IMPACT

GREENGUARD GOLD CERTIFIED
PHTHALATE FREE
PFAS FREE
NO FR ADDITIVES
NO ANTIMICROBIAL ADDITIVES
NO ANTIBACTERIAL ADDITIVES
BPA FREE
LEAD/HEAVY METAL FREE
FORMALDEHYDE FREE
VEGAN COMPLIANT
TRIS FREE
HPD AVAILABLE
PROP 65 COMPLIANT
REACH COMPLIANT
ROHS COMPLIANT
DOES NOT CONTAIN CONFLICT MINERALS

WARRANTY

STANDARD UPHOLSTERY | '5' FIVE YEAR WARRANTY
See [Warranty Terms](#) for more information.

DYE TRANSFER DISCLAIMER

Certain clothing and accessory dyes (such as those used on denim jeans) may migrate to lighter colors. This phenomenon is increased by humidity and temperature and is irreversible. Mayer Fabrics will not assume responsibility for dye transfer caused by external contaminants. Please check compatibility when using this product in combination with painted or varnished surfaces.

ADDITIONAL INFORMATION

Custom Colors: All patterns can be custom colored. Minimum yardage applies.

Digital Swatch Color Matching: Due to color variations on different monitors and color printers, actual swatch colors may vary slightly. Please request a memo sample from Mayer Fabrics to ensure proper color representation.

CLEANING & MAINTENANCE

CFC: Coated Fabrics Cleaning - When a spill/stain occurs wipe immediately with a clean dry cloth. Carefully remove the majority of the stain then follow the steps below.

Soap & Water - Remove ordinary dirt and smudges with a mild soap and water solution using a soft cloth or towel. Rinse with fresh water and wipe dry.

Non-abrasive Cleaners - If residue remains, use a straight application of the following cleaners: Fantastik or 409 and gently clean with a soft cloth. Rinse with fresh water and wipe dry.

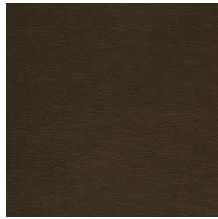
Isopropyl Alcohol - More stubborn stains may be eliminated using a cotton cloth soaked in 70-91% isopropyl (rubbing) alcohol. Wipe without spreading stain to surrounding area. A second application should be applied with vigorous rubbing in a circular motion. For highly textured material, a soft brush is recommended to clean valleys and crevices. Rinse with fresh water and wipe dry.

BC: Bleach Cleanable - 1 parts bleach, 9 parts water = 10% bleach, 90% water solution. Do not clean / disinfect fabric for longer than 10 minutes using the 10% bleach solution. Always rinse promptly with clean water after applying the bleach solution. Failure to do so will void any and all warranties.

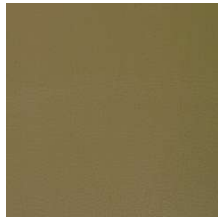
CARESSA COLORS (59)



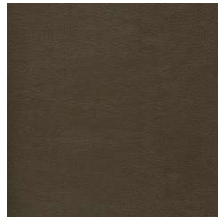
Coco
CA-000



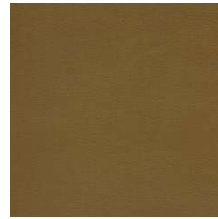
Chocolate
CA-010



Taupe
CA-030



Java
CA-040



Saddle
CA-050



Caramel
CA-060



Rawhide
CA-070



Bark
CA-080



Mocha
CA-090



Ruby
CA-001



Lipstick
CA-011



Red Pepper
CA-021



Burgundy
CA-041



Paprika
CA-051



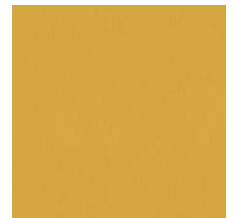
Cameo
CA-061



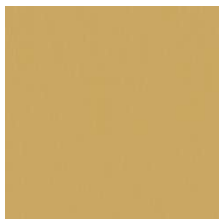
Butterscotch
CA-002



Mojave
CA-012



Lemon
CA-032



Butter
CA-042



Lime
CA-103



Jade
CA-113



Parsley
CA-123



Ivy
CA-133



Laurel
CA-053



Navy
CA-004



Bluestone
CA-104



Admiral
CA-014



Pacific
CA-114

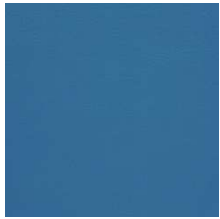


Skipper
CA-124

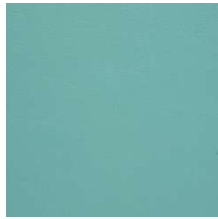


Cadet
CA-044

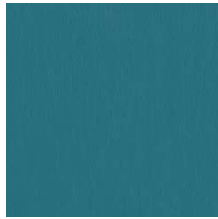
CARESSA COLORS (59)



Cerulean
CA-064



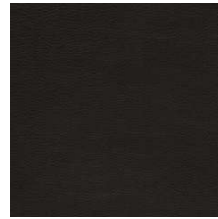
Aqua
CA-084



Calypso
CA-094



Aubergine
CA-005



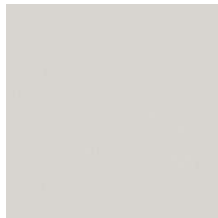
Black
CA-006



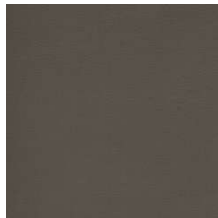
Cloud
CA-106



Pewter
CA-016



Glacier
CA-116



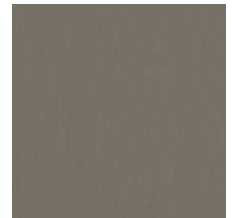
Granite
CA-026



Stone
CA-046



Zinc
CA-066



Aluminum
CA-076



Quarry
CA-086



Dove
CA-096



Pebble
CA-107



Sand
CA-117



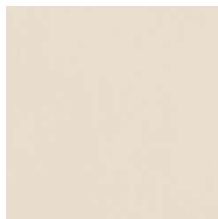
Buff
CA-027



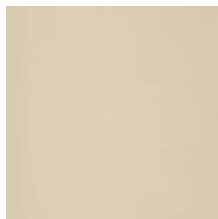
Bone
CA-127



Papyrus
CA-037



Pearl
CA-137



Doe
CA-047



Ivory
CA-077



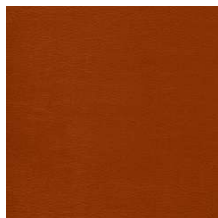
Oatmeal
CA-087



Flax
CA-097



Magenta
CA-018



Red Clay
CA-009



Bittersweet
CA-019



Ochre
CA-029



Tangerine
CA-039