

## FLORENTINO

FT-029, Mango

### TECHNICAL INFORMATION

CATEGORY: Upholstery

CONTENT: 86% Vinyl - Phthalate Free face, 14% Polyester backing

BACKING: 100% Brushed Polyester Knit

FINISH: Soil & Stain Resistant Top Coat with Ink Resistant Technology

WIDTH: 54"

WEIGHT: 28 oz./ln yd

VISUAL REPEAT: None

SHOWN RAILROADED: No

DIRECTIONAL: No

APPROX. ROLL SIZE: 30 yards

APPLICATION: Indoor / Atrium



### PERFORMANCE



ABRASION RESISTANCE: Passes 651,000 Double Rubs\* (Wyzenbeek/Cotton Duck)

BREAKING STRENGTH: Warp 95.0 / Fill 60.0

COLORFASTNESS TO CROCKING: Dry: Class 4 min/Wet: Class 4 min

COLORFASTNESS TO LIGHT: 650 hours

PILLING RESISTANCE: Class N/A

SEAM STRENGTH: Warp 45.0 / Fill 45.0

INK RESISTANT

LIQUID BARRIER

DENIM DYE RESISTANT

\* Multiple factors affect fabric durability and appearance retention, including end-user application and proper maintenance.

Wyzenbeek results above 100,000 double rubs have not been shown to be an indicator of increased lifespan.

### FLAMMABILITY

PASSES CAL TB 117-2013

NFPA 260/UFAC CLASS 1

AB 2998 COMPLIANT

FMVSS 302

### REDUCED ENVIRONMENTAL IMPACT

GREENGUARD GOLD CERTIFIED

PHthalate FREE

PFAS FREE

NO FR ADDITIVES

NO ANTIMICROBIAL ADDITIVES

NO ANTIBACTERIAL ADDITIVES

BPA FREE

LEAD/HEAVY METAL FREE

FORMALDEHYDE FREE

VEGAN COMPLIANT

TRIS FREE

HPD AVAILABLE

PROP 65 COMPLIANT

REACH COMPLIANT

ROHS COMPLIANT

DOES NOT CONTAIN CONFLICT MINERALS

## WARRANTY

STANDARD UPHOLSTERY | '5' FIVE YEAR WARRANTY  
See [Warranty Terms](#) for more information.

## DYE TRANSFER DISCLAIMER

Certain clothing and accessory dyes (such as those used on denim jeans) may migrate to lighter colors. This phenomenon is increased by humidity and temperature and is irreversible. Mayer Fabrics will not assume responsibility for dye transfer caused by external contaminants. Please check compatibility when using this product in combination with painted or varnished surfaces.

## ADDITIONAL INFORMATION

Custom Colors: All patterns can be custom colored. Minimum yardage applies.

Digital Swatch Color Matching: Due to color variations on different monitors and color printers, actual swatch colors may vary slightly. Please request a memo sample from Mayer Fabrics to ensure proper color representation.

## CLEANING & MAINTENANCE

WS: Water/Solvent Cleaner - Spot clean with a mild solvent, an upholstery shampoo, or the foam from a mild detergent. When using a solvent or dry cleaning product, follow instructions carefully and clean only in a well-ventilated room. Avoid any product that contains carbon tetrachloride or other toxic materials. With either method, pretest a small area before proceeding. Always rinse promptly with clean water.

CFC: Coated Fabrics Cleaning - When a spill/stain occurs wipe immediately with a clean dry cloth. Carefully remove the majority of the stain then follow the steps below.

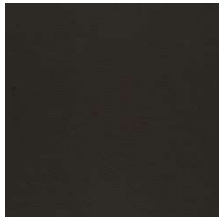
Soap & Water - Remove ordinary dirt and smudges with a mild soap and water solution using a soft cloth or towel. Rinse with fresh water and wipe dry.

Non-abrasive Cleaners - If residue remains, use a straight application of the following cleaners: Fantastik or 409 and gently clean with a soft cloth. Rinse with fresh water and wipe dry.

Isopropyl Alcohol - More stubborn stains may be eliminated using a cotton cloth soaked in 70-91% isopropyl (rubbing) alcohol. Wipe without spreading stain to surrounding area. A second application should be applied with vigorous rubbing in a circular motion. For highly textured material, a soft brush is recommended to clean valleys and crevices. Rinse with fresh water and wipe dry.

BC: Bleach Cleanable - 1 parts bleach, 9 parts water = 10% bleach, 90% water solution. Do not clean / disinfect fabric for longer than 10 minutes using the 10% bleach solution. Always rinse promptly with clean water after applying the bleach solution. Failure to do so will void any and all warranties.

FLORENTINO COLORS (27)



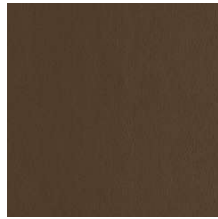
**Sable**  
FT-000



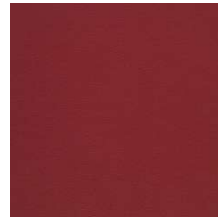
**Latte**  
FT-010



**Bark**  
FT-020



**Mocha**  
FT-030



**Scarlet**  
FT-001



**Lipstick**  
FT-011



**Dijon**  
FT-012



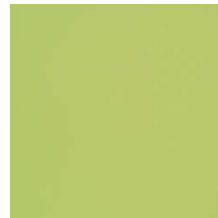
**Caramel**  
FT-022



**Jonquil**  
FT-032



**Fern**  
FT-003



**Willow**  
FT-033



**Basil**  
FT-043



**Sapphire**  
FT-004



**Marine**  
FT-014



**Bluejay**  
FT-034



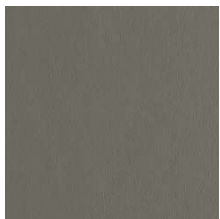
**Turquoise**  
FT-044



**Jet**  
FT-006



**Slate**  
FT-016



**Dove**  
FT-026



**Cream**  
FT-007



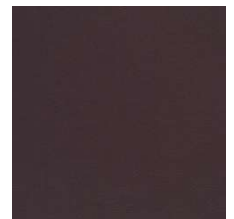
**Biscuit**  
FT-017



**Khaki**  
FT-027



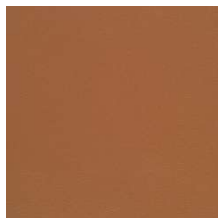
**Mushroom**  
FT-037



**Plum**  
FT-008



**Chili**  
FT-009



**Sepia**  
FT-019



**Mango**  
FT-029