

NOBLE

NB-004, Indigo
 Tourist Collection

TECHNICAL INFORMATION

CATEGORY: Upholstery
 CONTENT: 78% Vinyl - Phthalate Free face, 22% Polyester backing
 BACKING: Polyester
 FINISH: Soil & Stain Resistant Top Coat with Ink Resistant Technology
 WIDTH: 54"
 WEIGHT: 30 oz./ln yd
 VISUAL REPEAT: None
 SHOWN RAILROADED: No
 DIRECTIONAL: No
 APPROX. ROLL SIZE: 25 yards
 APPLICATION: Indoor / Atrium

PERFORMANCE

ABRASION RESISTANCE: Exceeds 100,000 Double Rubs*
 (Wyzenbeek/Cotton Duck)
 BREAKING STRENGTH: Warp 101.0 / Fill 93.0
 COLORFASTNESS TO CROCKING: Dry: Class 4 min/Wet: Class 4 min
 COLORFASTNESS TO LIGHT: 300 hours
 PILLING RESISTANCE: Class n/a
 SEAM STRENGTH: Warp 50.0 / Fill 50.0
 INK RESISTANT
 LIQUID BARRIER
 DENIM DYE RESISTANT

* Multiple factors affect fabric durability and appearance retention, including end-user application and proper maintenance. Wyzenbeek results above 100,000 double rubs have not been shown to be an indicator of increased lifespan.

FLAMMABILITY

PASSES CAL TB 117-2013
 NFPA 260/UFAC CLASS 1
 AB 2998 COMPLIANT
 FMVSS 302

**REDUCED ENVIRONMENTAL IMPACT**

GREENGUARD GOLD CERTIFIED
 PFAS FREE
 NO FR ADDITIVES
 NO ANTIMICROBIAL ADDITIVES
 NO ANTIBACTERIAL ADDITIVES
 BPA FREE
 LEAD/HEAVY METAL FREE
 FORMALDEHYDE FREE
 VEGAN COMPLIANT
 TRIS FREE
 HPD AVAILABLE
 PROP 65 COMPLIANT
 REACH COMPLIANT
 ROHS COMPLIANT
 DOES NOT CONTAIN CONFLICT MINERALS

WARRANTY

STANDARD UPHOLSTERY | '5' FIVE YEAR WARRANTY
See [Warranty Terms](#) for more information.

DYE TRANSFER DISCLAIMER

Certain clothing and accessory dyes (such as those used on denim jeans) may migrate to lighter colors. This phenomenon is increased by humidity and temperature and is irreversible. Mayer Fabrics will not assume responsibility for dye transfer caused by external contaminants. Please check compatibility when using this product in combination with painted or varnished surfaces.

ADDITIONAL INFORMATION

Custom Colors: All patterns can be custom colored. Minimum yardage applies.

Digital Swatch Color Matching: Due to color variations on different monitors and color printers, actual swatch colors may vary slightly. Please request a memo sample from Mayer Fabrics to ensure proper color representation.

CLEANING & MAINTENANCE

CFC: Coated Fabrics Cleaning - When a spill/stain occurs wipe immediately with a clean dry cloth. Carefully remove the majority of the stain then follow the steps below.

Soap & Water - Remove ordinary dirt and smudges with a mild soap and water solution using a soft cloth or towel. Rinse with fresh water and wipe dry.

Non-abrasive Cleaners - If residue remains, use a straight application of the following cleaners: Fantastik or 409 and gently clean with a soft cloth. Rinse with fresh water and wipe dry.

Isopropyl Alcohol - More stubborn stains may be eliminated using a cotton cloth soaked in 70-91% isopropyl (rubbing) alcohol. Wipe without spreading stain to surrounding area. A second application should be applied with vigorous rubbing in a circular motion. For highly textured material, a soft brush is recommended to clean valleys and crevices. Rinse with fresh water and wipe dry.

BC: Bleach Cleanable - 1 parts bleach, 9 parts water = 10% bleach, 90% water solution. Do not clean / disinfect fabric for longer than 10 minutes using the 10% bleach solution. Always rinse promptly with clean water after applying the bleach solution. Failure to do so will void any and all warranties.

NOBLE COLORS (27)



Java
NB-000



Mocha
NB-010



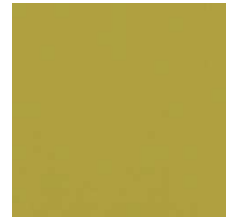
Paprika
NB-001



Dijon
NB-002



Basil
NB-003



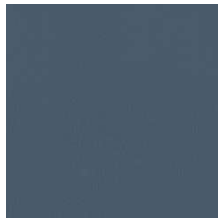
Citrus
NB-013



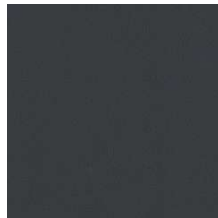
Indigo
NB-004



Teal
NB-014



Blue Fog
NB-024



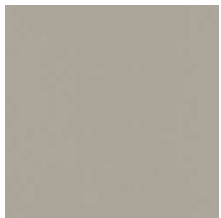
Onyx
NB-006



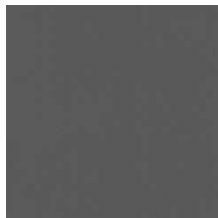
Thunder
NB-016



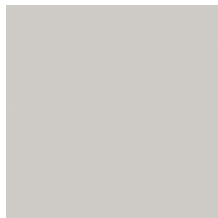
Greige
NB-026



Dove
NB-036



Charcoal
NB-046



Folkstone
NB-056



Slate Grey
NB-066



Tundra
NB-076



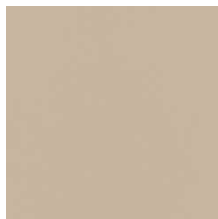
Buff
NB-007



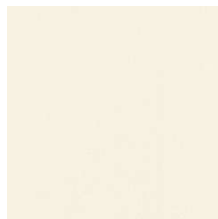
Camel
NB-017



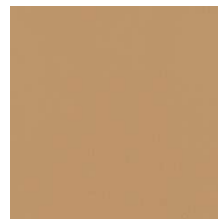
Cream
NB-027



Beach
NB-037



White
NB-047



Rattan
NB-057



Stone
NB-067



Sangria
NB-008



Apricot
NB-009



Spice
NB-019